

DATA ADVISOR[®]

COMPUTER WON'T BOOT? HARD DRIVE GIVING YOU ERRORS? DATA ADVISOR CAN QUICKLY HELP YOU DIAGNOSE THE HEALTH OF YOUR COMPUTER!

This simple, but powerful diagnostic tool quickly assesses the health of your hard drive, computer memory, and critical operating system structures by identifying problems leading to potential data loss.

With Data Advisor, you have the diagnostic capabilities of the world's largest data recovery company, on a self-bootable 3.5" floppy diskette. In just minutes, Data Advisor diagnoses the source of the problem and issues a report on its findings—whether it is related to your hard drive failing, operating system structural damage, or errant computer memory.

This comprehensive diagnostic tool can also be used as part of a regular maintenance program to identify potential problems that could lead to data loss. If potential problems are identified, you will have time to backup your valuable information and make corrections to avoid future data loss.

FIRST YOU NEED TO KNOW THE CAUSE OF THE PROBLEM

Diagnosis is key in treating any problem; only by knowing the cause of the problem can you treat it effectively. Data Advisor gives you the power of information to get your data back.

DON'T MAKE THE PROBLEM WORSE

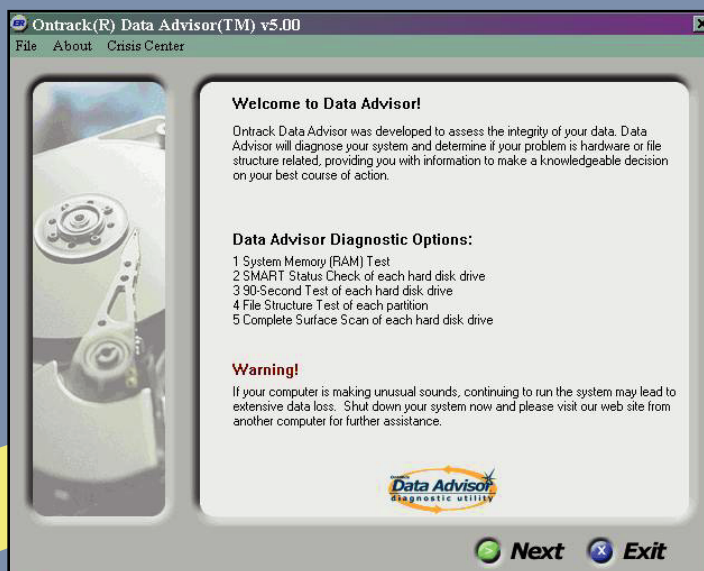
Some over-the-counter repair and recovery utilities can damage your data. They apply the same solutions to every problem, without diagnosing it first. Because these solutions focus on the problem and not the data, they can permanently damage your data through their repair efforts.

Data Advisor is a non-destructive diagnostic tool. It stops immediately upon finding the problem so nothing is damaged.

FOLLOW THESE EASY STEPS:

- 1. Exit Windows**
- 2. Shut down your computer**
- 3. Insert the Data Advisor Emergency Boot Diskette**
- 4. Restart the computer**

Data Advisor then boots automatically from its own operating system—so it works even when your computer won't. Just follow the steps on the screen for quick and easy relief from computer malfunction.

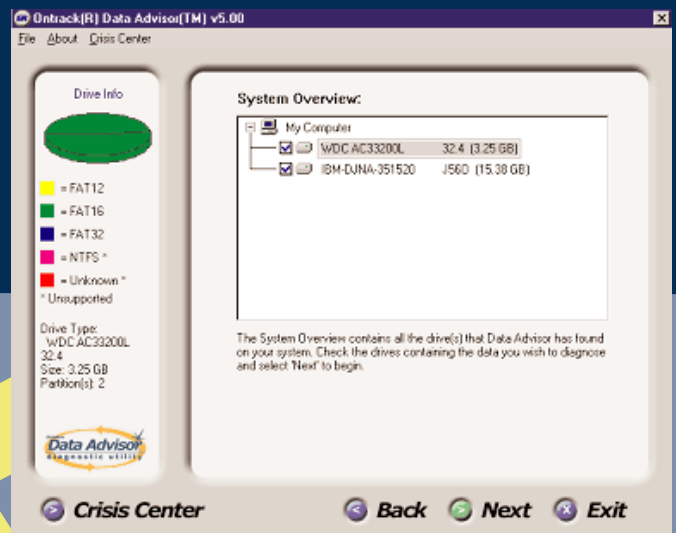
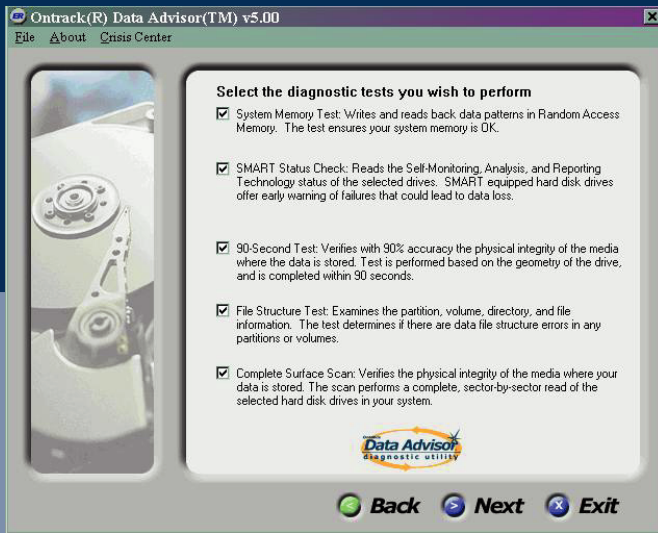


Ontrack[®]

Minneapolis • Los Angeles • Boulder • Washington DC • New York • London • Paris • Tokyo • Stuttgart

www.ontrack.com
1-800-872-2599

1122D1101



A COMPLETE DIAGNOSIS

Data Advisor diagnostic test options include: a Quick Functional Test, SMART Status Check, Complete Surface Scan, 90-Second Quick Surface Scan, File Structure Test, and System Memory Test.

Quick Functional Test

Performs random reads and seeks on the hard disk to check for catastrophic physical problems.

SMART Status Check

Informs you of any warnings or alerts that have been set by the hard drive. Self-Monitoring, Analysis and Reporting Technology (SMART) is a technology embedded by manufacturers into many hard drives to offer an early warning of failures.

Complete Surface Scan

Verifies the physical integrity of the hard disk platters by reading every sector on the hard disk.

File Structure Test

Reads and verifies the integrity of the File Allocation Tables (FAT) on DOS, Windows 3.x, Windows 95, 98, Me, NT*, 2000* and XP*. Checks critical boot sectors, reads the Master Boot Record and crosschecks partition tables and CMOS.

System Memory Test

Exercises and verifies the integrity of the memory in the computer system and detects defects and errors.

THE LAST DIAGNOSTIC YOU'LL EVER NEED

If Data Advisor reports File System Structure errors, they may be caused by a lock-up or failure to shutdown Windows® correctly. These errors may be repaired through normal system maintenance. If you experience a hardware error, you should isolate the cause and replace the failing component. If you are unsure how to proceed with repairs, contact a computer professional. After completing any maintenance, run Data Advisor again to verify that all errors have been repaired. If errors continue to occur, the system may not be stable.

If you experience data loss, the Ontrack Crisis Center™ has options for recovering lost data. These options include EasyRecovery™ do-it-yourself data recovery software; Remote Data Recovery™ service delivered through a modem or Internet connection; and In-Lab Data Recovery for the most severe of data loss situations, when a cleanroom is required.

SYSTEM REQUIREMENTS

- IDE/EIDE/ATA interface and SCSI drives
- Compatible with any PC with a 486 or greater processor
- Structure diagnostics support DOS, Windows 3.x, 95, 98, Me, NT*, 2000* and XP*
- Emergency Boot Diskette creator requires Windows 95, 98, Me, NT, 2000 or XP
- Minimum of 16 MB of memory (in most cases)
- 1.44MB floppy disk drive

* Support for FAT formatted partitions only

© 2001 ONTRACK Data International, Inc. Ontrack and Data Advisor are trademarks or registered trademarks of ONTRACK Data International, Inc. in the United States and/or other countries. All other brands and product names used herein are the property of their respective owners.

Ontrack®

Minneapolis • Los Angeles • Boulder • Washington DC • New York • London • Paris • Tokyo • Stuttgart

www.ontrack.com
1-800-872-2599

1122D1101